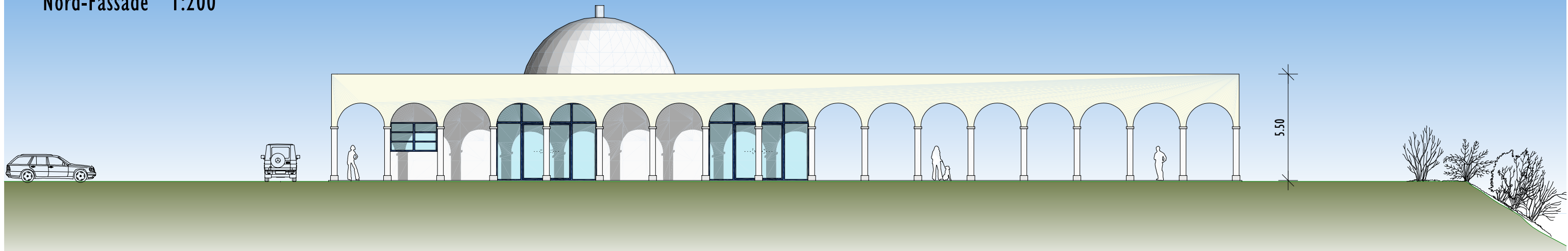
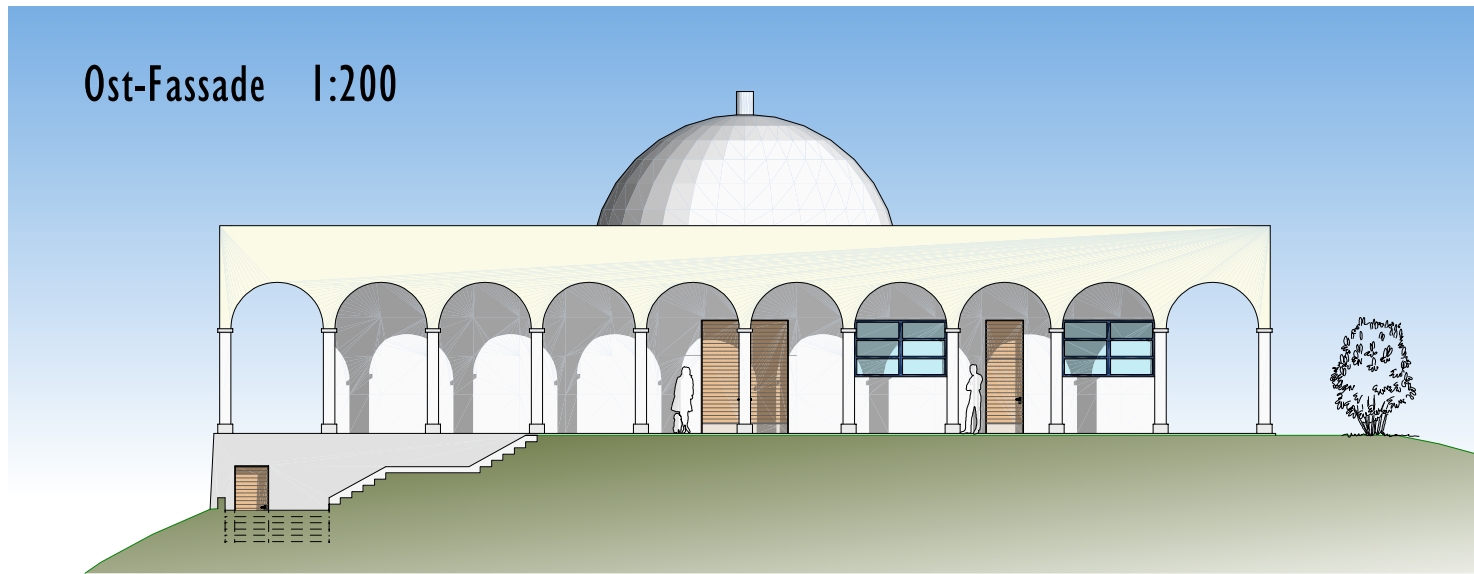


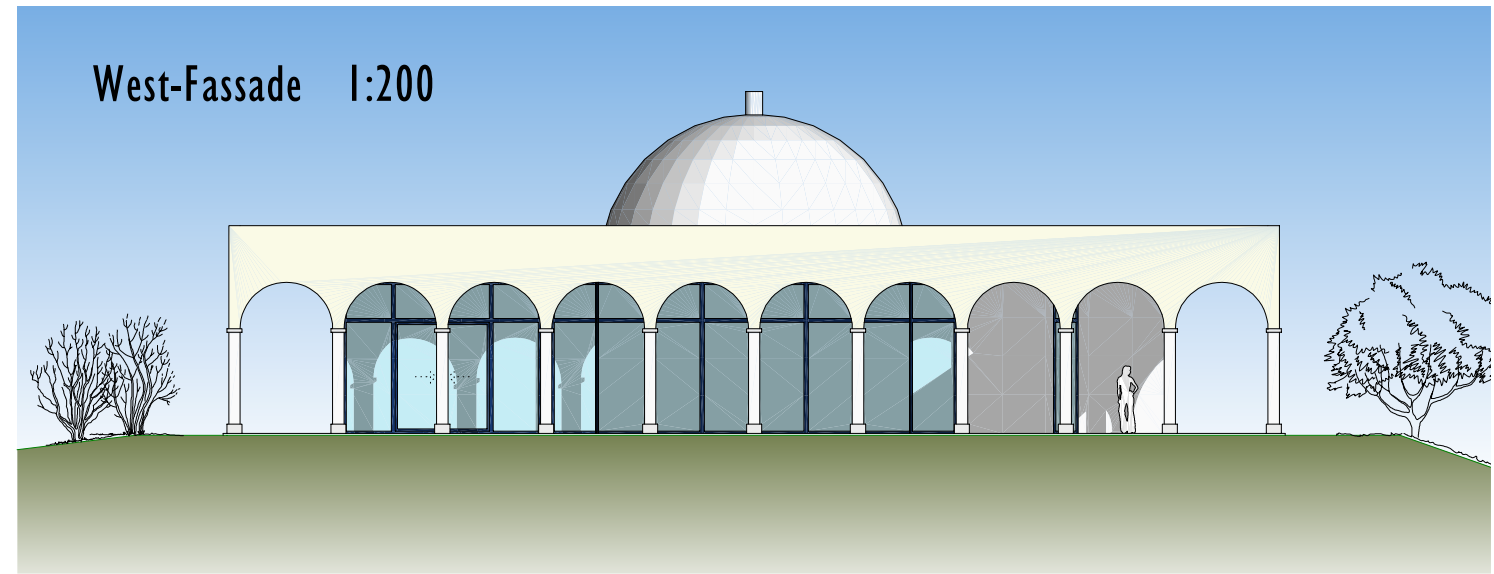
Nord-Fassade 1:200



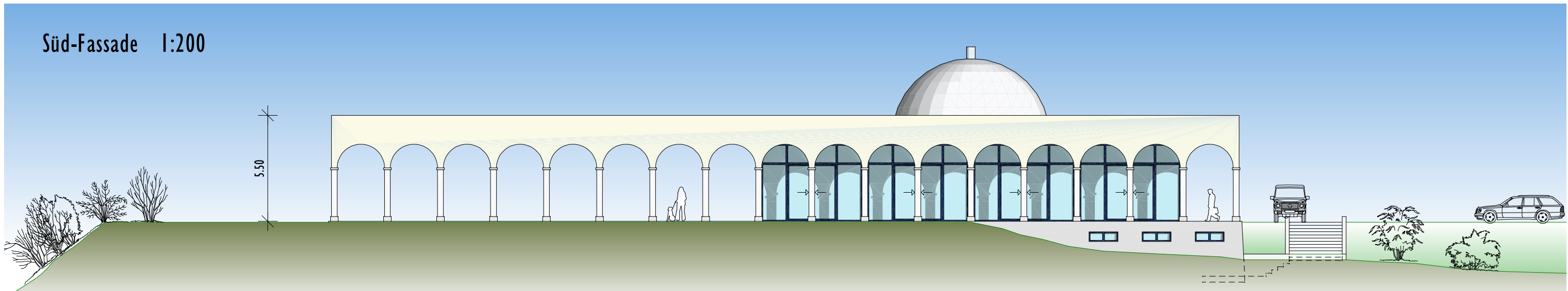
Ost-Fassade 1:200



West-Fassade 1:200



Süd-Fassade 1:200



Projekt - Fassaden 1:200

Dr. A. Ileri, Privat

Plan NR.: 22

17.03.2004



BOHRAUS Planung & Architektur AG, Sempacherstrasse 1, Postfach 5352, 6000 Luzern 5
 Tel.: 041/226'20'40, Fax: 041/226'20'46, Mail: bohraus.ag@bohraus.com, www.bohraus.com